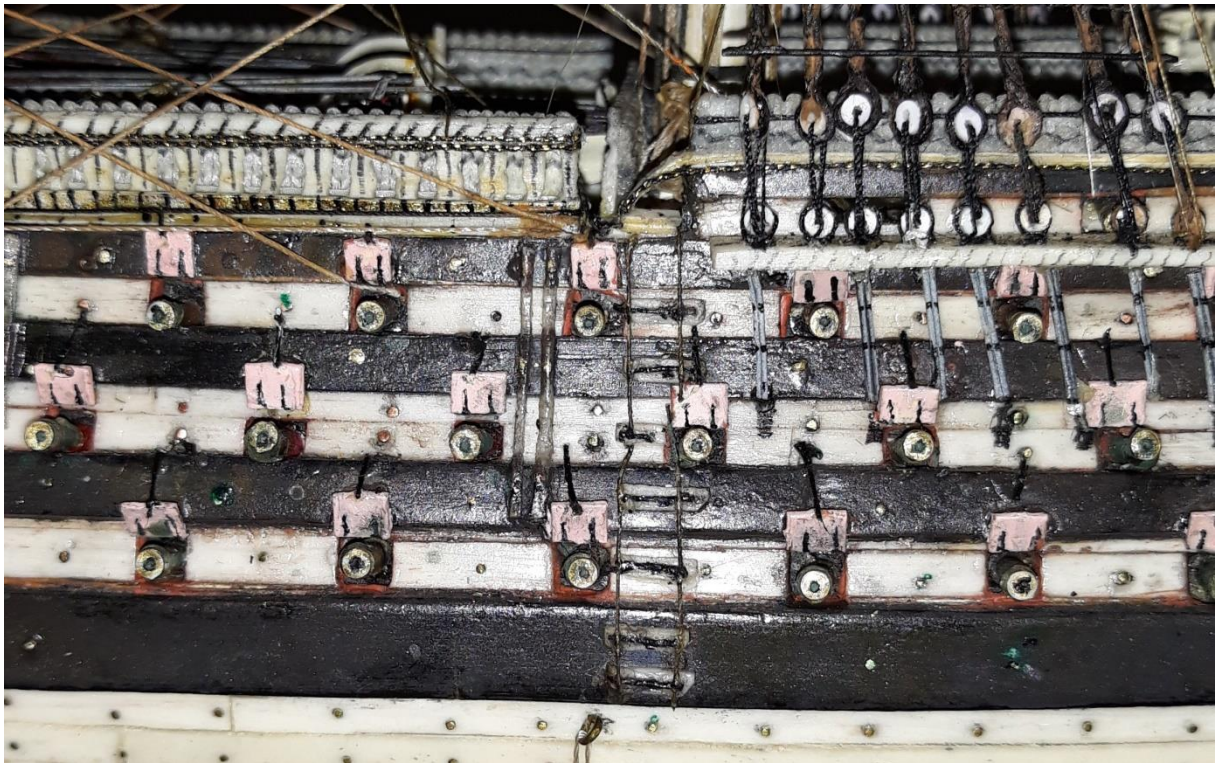


A Private collector in Hamburg

A POW Bone Ship Model of the British 98-gun second rate ship of the line HMS *Neptune*, circa 1800. Under glass dome. The model is very detailed. Maybe, the artist was on board the HMS *Neptune*.

Provenance: The present owner acquired the model during auction in Le Havre. Height: 37.4 cm; Length: 42 cm; Width: 14 cm.





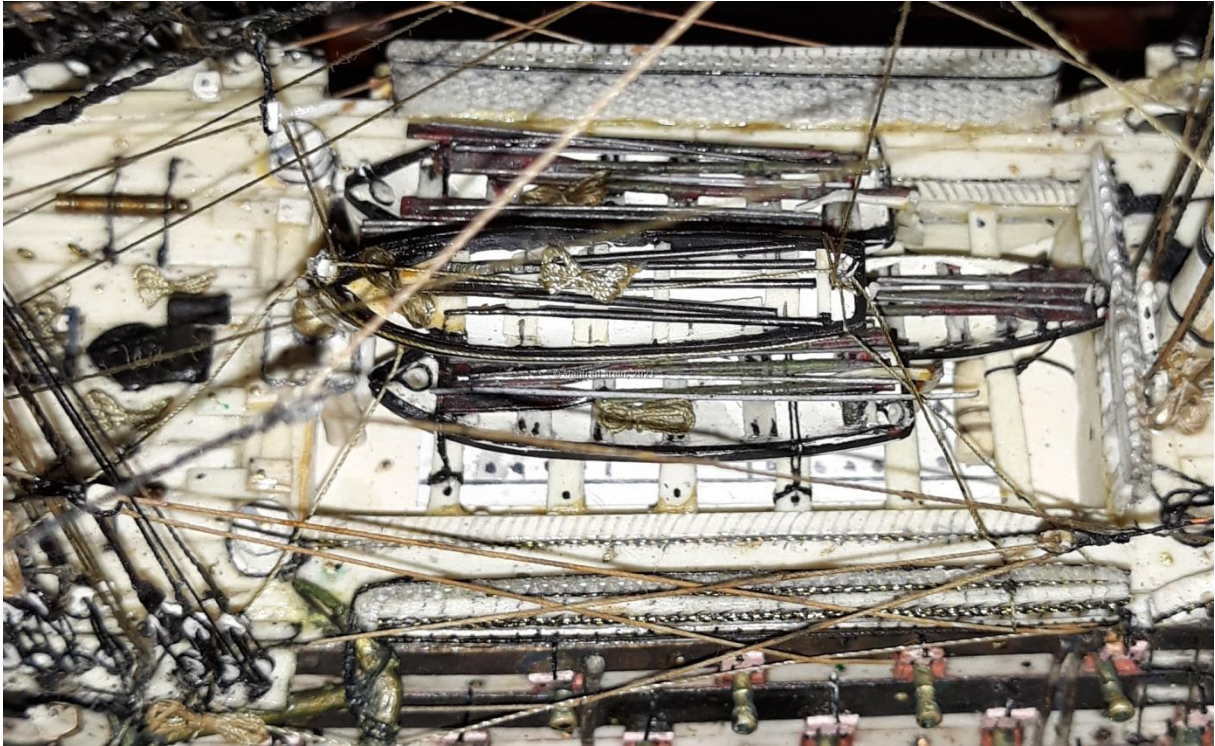
Hammock nettings (top left)

„Special racks were used on deck to store the hammocks during the daytime. This was done for two reasons: to air the hammocks and to provide splinter shield during combat operations. After the Battle of the Nile in Aboukir Bay on August 1st and 2nd 1798, *„Virtually all the hammocks stored in the rails were cut and shredded by gunfire.“*¹

„For the Battle of Trafalgar, under Nelson's plan, the most powerful ships in the fleet would head up the two columns. There are two reasons for this. First, the lead ships would be better placed to absorb the punishment. Second, the initial strike had to be powerful to demoralize the enemy. Thus the giant three-decked ships should be in the front. HMS *Neptune* was placed at the third place in Nelson's Column, together with her sister ships HMS *Temeraire* and HMS *Leviathan*. Prior to going into action, Captain Fremantle had written in his personal log, complaining about being placed in third despite of HMS *Neptune*'s lack of speed. The ship had a reputation as a slow sailer. However, at the battle, he set the ship's studding sails and by 10am, *Neptune* was about to overtake HMS *Victory*'s lead. Nelson ordered a signal to be hoisted "*Neptune*, take in your studding sails and drop astern, I shall break the line myself".²

¹ Stein, Manfred 2015. PRISONER OF WAR BONE SHIP MODELS - Treasures from the age of the Napoleonic Wars, Hamburg, Koehler, ISBN 978-3-7822-1205-2. [published 2015](#)

² [HMS NEPTUNE model \(modelshipmaster.com\)](#)



Waist, long boats, cannon barrels, hammock nettings

On the waist we see three long boats, equipped with oars and mooring lines. The waist is surrounded with hammock nettings. Extra cannon barrels are mounted on the foredeck.



Figurehead of Neptun







